



## my elevation.

Elevation designs available for the Holly:

the Holly  
2148 sqft  
4 Bedrooms  
2 Bathrooms



the Holly 150



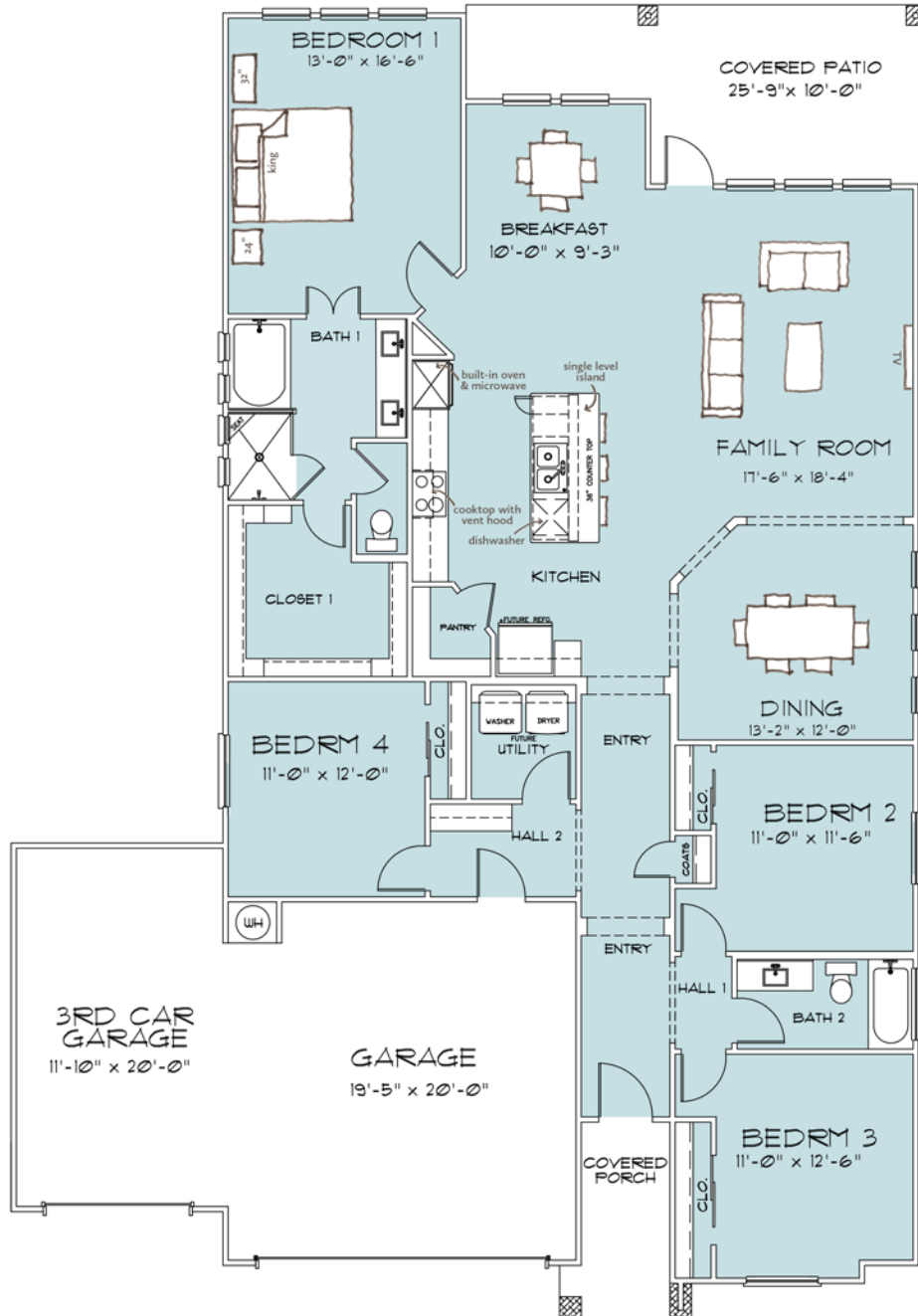
the Holly 450



# THE Grove WEST

my floor plan.

Shown with Holly Elevation 150:



## the Holly

2148 sqft • 4 Bedrooms • 2 Bathrooms

[www.omegabuilders.com](http://www.omegabuilders.com)



Plans, elevations, features and options are subject to change without prior notice or obligation. Elevation materials may vary per community specifications. Some listed features and options may not be available on this home and/or are subject to change. Square footage is approximate and may vary upon elevation and/or plan options. Images are conceptual drawings only and may show upgraded/mature landscaping that may not represent this community. Consult an Omega Builders representative for working drawings, actual dimensions, features, options and other information.

glw-princeton | rev 03-31-23