

THE Grove EAST

my elevation.

Elevation designs available for the Porter:

the Porter

1857 sqft
4 Bedrooms
2 Bathrooms



the Porter 100



the Porter 200



the Porter 300



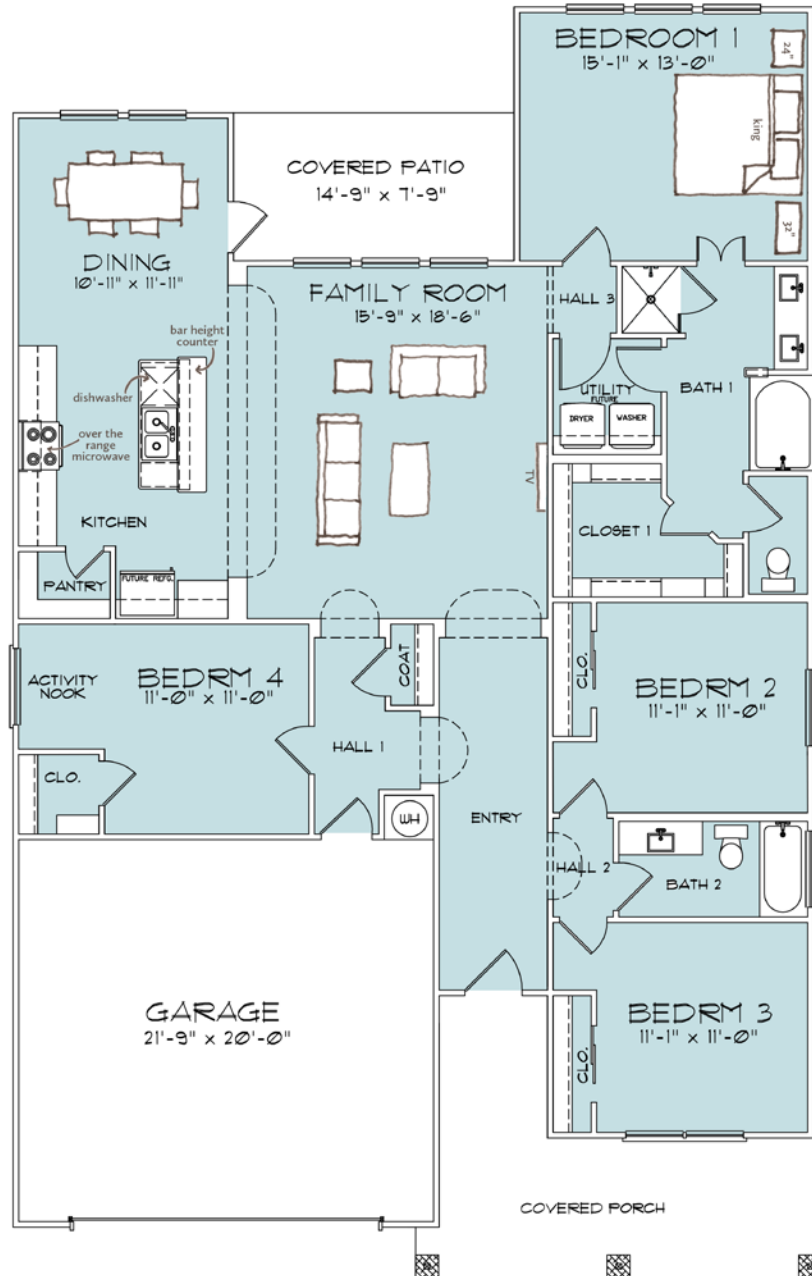
www.omegabuilders.com

gle-windsor | rev 01-07-22

THE Grove EAST

my floor plan.

Shown with Porter Elevation 100:



the Porter

1857 sqft • 4 Bedrooms • 2 Bathrooms

www.omegabuilders.com



Plans, elevations, features and options are subject to change without prior notice or obligation. Elevation materials may vary per community specifications. Some listed features and options may not be available on this home and/or are subject to change. Square footage is approximate and may vary upon elevation and/or plan options. Images are conceptual drawings only and may show upgraded/mature landscaping that may not represent this community. Consult an Omega Builders representative for working drawings, actual dimensions, features, options and other information.

gle-windsor | rev 01-07-22