

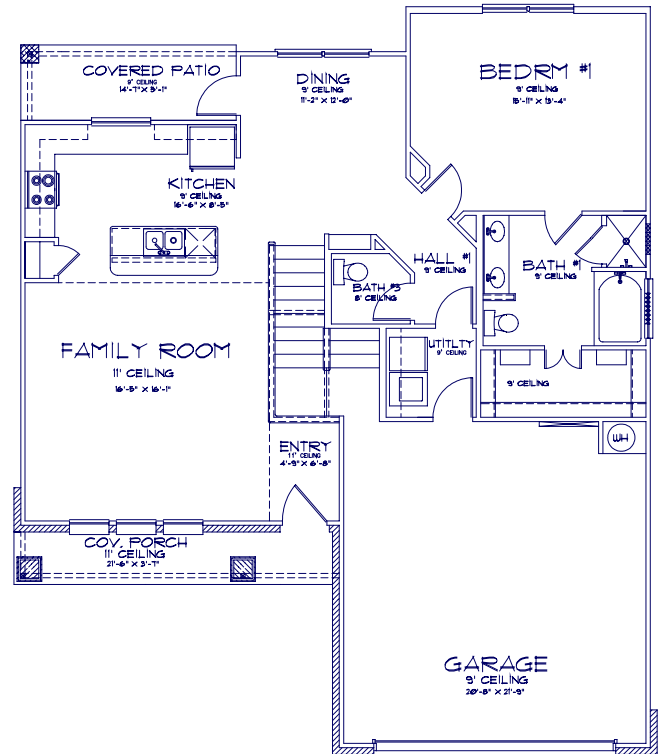
Bentwood



OMEGA
BUILDERS

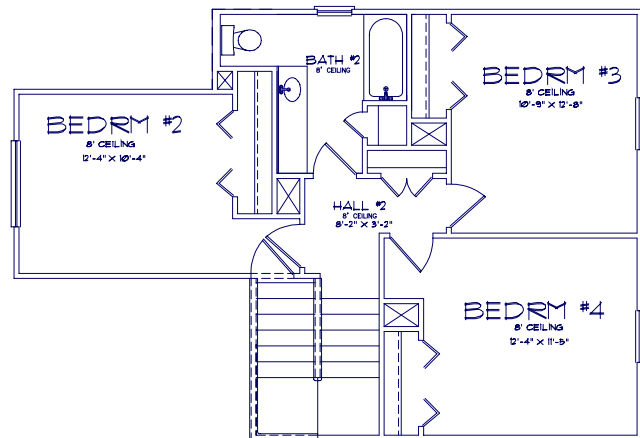
"The Clarksville II"

\$182,950



Design Features

- 4 Bedroom, 2.5 Bathroom
- Private Master Suite Downstairs
- Large, Open Family Room
- Open Kitchen w/ Island
- Appliance Package Included!
- Large Dining Area
- Vinyl Windows w/ Low-E Glass
- Pre-wired for Security System
- Covered Porch and Patio
- 14 Seer Lennox Heat Pump
- Privacy Fence Included
- Foundation Termite Pre-Treatment



Neighborhood Amenities

- Fenced Back Yards
- Neighborhood Playground
- Homeowners Association
- Beautifully Landscaped Entrance
- Close to Shopping & Hospitals

5712 Butterfly Ct

(254) 771-2296
omegabuilders.com

Plans, elevations, features and options are subject to change. Plan dimensions, brick coverage and flooring may vary by subdivision. Some listed features and options may not be available on this home and/or are subject to change. Consult Omega representative and working drawings for actual dimensions, features, options and other information. Elevation is conceptual drawing only. © Copyright 2009 Omega Builders.



KraftMaid
Cabinetry