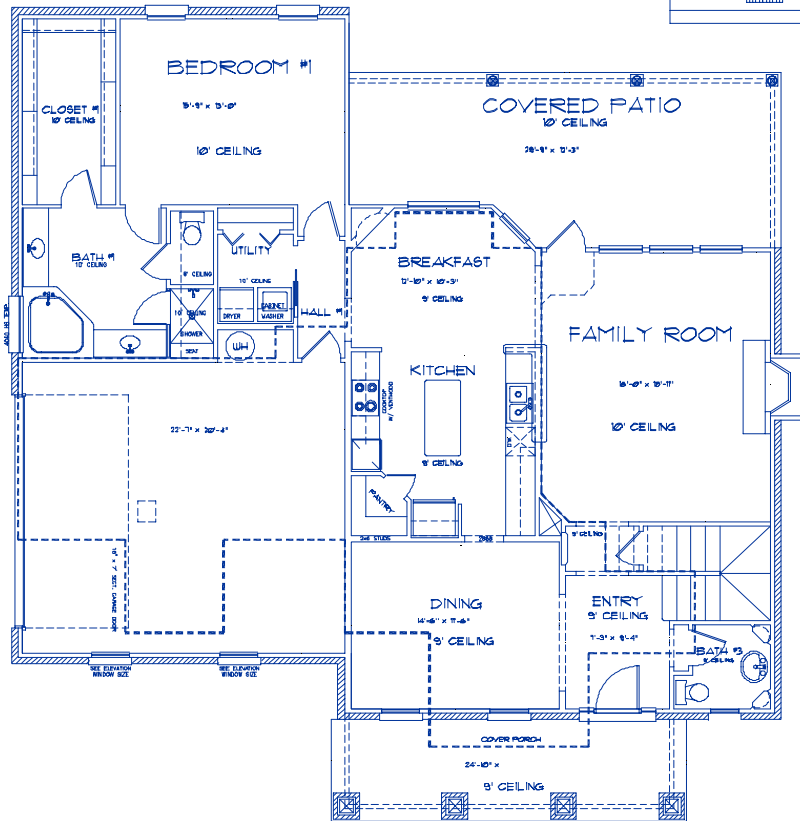


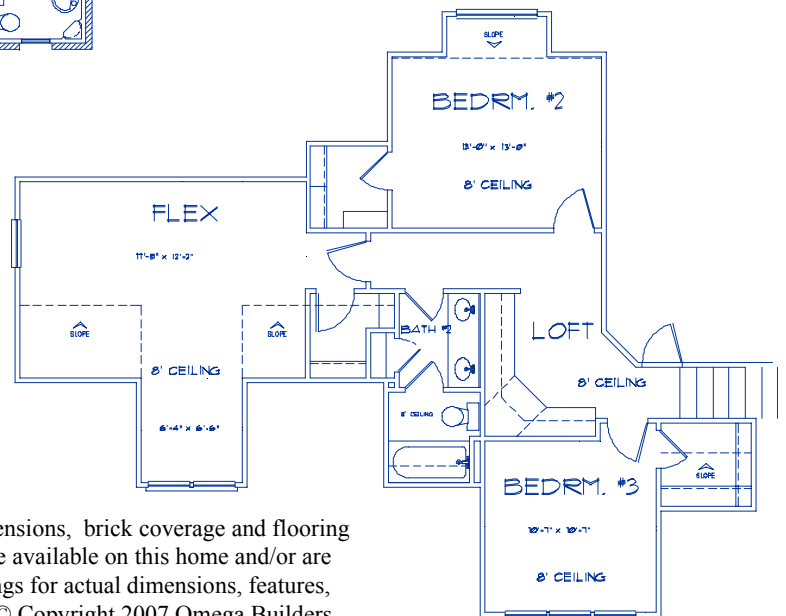


**OMEGA**  
BUILDERS



### Plan Features

- 3 BR, 2.5 Bath & Large Flex (or 4<sup>th</sup> BR)
- Kitchen with large Island
- Step-in Pantry
- His & Hers Vanities
- Garden Tub & separate shower
- Spacious Walk-In Closet
- Oversized Covered Patio
- Large Front Porch with Columns



Plans, elevations, features and options are subject to change. Plan dimensions, brick coverage and flooring may vary by subdivision. Some listed features and options may not be available on this home and/or are subject to change. Consult Omega representative and working drawings for actual dimensions, features, options and other information. Elevation is conceptual drawing only. © Copyright 2007 Omega Builders.

**"Bradford"**

Living Area: 2,499 sf  
Width: 55.6'  
Depth: 57.0'

[omegabuilders.com](http://omegabuilders.com)

(254) 771-2296  
Temple, TX